



Delivery Range 2021

Version 05/2021

# KG-System (PVC-U)

## Coex SN 4, Coex SN 8, Full wall SN 10

### Drainage Pipes and Fittings



**Gebr. Ostendorf Kunststoffe GmbH**

Rudolf-Diesel-Straße 6-8 · 49377 Vechta · Germany

Tel. +49 (0) 4441 874-10 · Fax +49 (0) 4441 874-15

[verkauf@ostendorf-kunststoffe.com](mailto:verkauf@ostendorf-kunststoffe.com)

[www.ostendorf-kunststoffe.com](http://www.ostendorf-kunststoffe.com)

WHAT YOU CAN COUNT ON:

# Service through and through...

## CONTACT PERSONS

Please visit our website: [www.ostendorf-kunststoffe.com](http://www.ostendorf-kunststoffe.com)

## QUALITY PRODUCTS MADE IN GERMANY



Factory in Vechta



Factory in Emstek

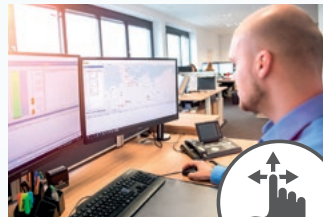


Factory in Rain am Lech

## RELIABLE ORDER PROCESSING



EDI  
Reception of orders



Binding  
delivery dates



Order picking



Transport of goods



## ALSO OFFERED BY OSTENDORF




Premium quality  
for a top price!





Custom solutions  
according to client  
requirements



## DIGITALIZATION

Catalogs on [www.oxomi.de](http://www.oxomi.de) 

Technical product data on [www.itek.de](http://www.itek.de) 

VOB conform tendering on [www.stlb-bau-online.de](http://www.stlb-bau-online.de) 

All tender specifications on [AUSSCHREIBEN.DE](http://AUSSCHREIBEN.DE)

BIM-Revit-Data on [www.mepcontent.com](http://www.mepcontent.com) 

# Technical Specifications

## KG-System (PVC-U)

### Coex SN 4, Coex SN 8, Full wall SN 10


#### Commercial Name

Ostendorf Kanalgrundrohr (underground drainage pipe)

#### Material

PVC-U (Polyvinylchloride, unplasticized)

**co-extruded pipes: DIN EN 13476-2**  
**full wall pipes SN 10: DIN EN 1401-1**  
**fittings: DIN EN 1401-1**

NF 442 (in grey) 

#### Application

underground drainage

#### Nominal diameters DN/OD

110, 125, 160, 200, 250, 315, 400, 500

#### Installation

DIN EN 1610, DIN EN 476, DIN 1986-100

#### Colour

orange brown RAL 8023

#### Seal

Factory inlaid SBR lip seal acc. to DIN EN 681 for SN 4 coex pipes and for all fittings. The coex pipes SN 8 and the full wall pipes SN 10 come with a considerable improved factory inlaid lip seal. The new lip seal has a fixed supporting ring made of PP. The required tightness acc. to DIN 1277 with vacuum and water is exceeded. The lip seal is produced acc. to DIN EN 681.

For waste water containing oil and fat NBR lip seals must be used (see page 14).

#### Chemical Resistance

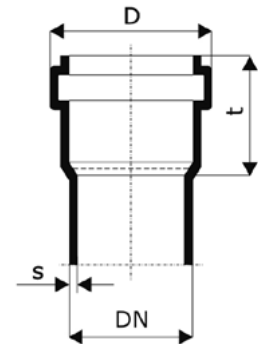
Discharge of aggressive media in the range of pH2 – pH12.

#### Marking

Permanent marking with manufacturer label, nominal diameter, DIN standard (DIN EN 13476-2 / DIN EN 1401-1), date of manufacture (Fittings additionally bear information about the nominal angle.)

#### Pipe Structure

co-extruded pipes with multi-layer wall structure  
 full wall pipes with homogenous wall structure



#### KGEM – Coex pipes SN 4

DN/OD	s (mm)	D (mm)	t (mm)
110	3,2	127	66
125	3,2	144	68
160	4,0	182	84
200	4,9	225	106
250	6,2	287	128
315	7,7	355	162
400	9,8	445	194
500	12,3	567	219

#### KGEM – Coex pipes SN 8

DN/OD	s (mm)	D (mm)	t (mm)
110	3,2	127	66
160	4,7	182	84
200	5,9	225	106
250	7,3	287	128
315	9,2	355	162
400	11,7	445	194
500	14,6	567	219

#### KGEM – Full wall pipes SN 10

DN/OD	s (mm)	D (mm)	t (mm)
110	3,2	127	66
160	4,7	183	81
200	5,9	226	99
250	7,3	287	125
315	9,2	355	135
400	11,7	445	180
500	14,6	567	210

# KG-System (PVC-U) Coex SN 4, Coex SN 8, Full wall SN 10

Delivery Range 2021

Version 05/2021



## SN 4 Coex pipes

### KGEM – Pipe SN 4 Coex

No.	Description	Unit/pallet	Unit
220000	KGEM Pipe SN 4 Coex DN/OD 110 x 500 mm	96	Pallet
220010	KGEM Pipe SN 4 Coex DN/OD 110 x 1000 mm	86	Pallet
220020	KGEM Pipe SN 4 Coex DN/OD 110 x 2000 mm	86	Pallet
220030	KGEM Pipe SN 4 Coex DN/OD 110 x 3000 mm	86	Pallet
220050	KGEM Pipe SN 4 Coex DN/OD 110 x 5000 mm	86	Pallet
221000	KGEM Pipe SN 4 Coex DN/OD 125 x 500 mm	70	Pallet
221010	KGEM Pipe SN 4 Coex DN/OD 125 x 1000 mm	60	Pallet
221020	KGEM Pipe SN 4 Coex DN/OD 125 x 2000 mm	60	Pallet
221030	KGEM Pipe SN 4 Coex DN/OD 125 x 3000 mm	60	Pallet
221050	KGEM Pipe SN 4 Coex DN/OD 125 x 5000 mm	60	Pallet
222000	KGEM Pipe SN 4 Coex DN/OD 160 x 500 mm	40	Pallet
222010	KGEM Pipe SN 4 Coex DN/OD 160 x 1000 mm	40	Pallet
222020	KGEM Pipe SN 4 Coex DN/OD 160 x 2000 mm	40	Pallet
222030	KGEM Pipe SN 4 Coex DN/OD 160 x 3000 mm	40	Pallet
222050	KGEM Pipe SN 4 Coex DN/OD 160 x 5000 mm	40	Pallet
223000	KGEM Pipe SN 4 Coex DN/OD 200 x 500 mm	25	Pallet
223010	KGEM Pipe SN 4 Coex DN/OD 200 x 1000 mm	25	Pallet
223020	KGEM Pipe SN 4 Coex DN/OD 200 x 2000 mm	25	Pallet
223030	KGEM Pipe SN 4 Coex DN/OD 200 x 3000 mm	25	Pallet
223050	KGEM Pipe SN 4 Coex DN/OD 200 x 5000 mm	25	Pallet
224010	KGEM Pipe SN 4 Coex DN/OD 250 x 1000 mm	16	1
224020	KGEM Pipe SN 4 Coex DN/OD 250 x 2000 mm	16	1
224030	KGEM Pipe SN 4 Coex DN/OD 250 x 3000 mm	16	1
224050	KGEM Pipe SN 4 Coex DN/OD 250 x 5000 mm	16	1
225010	KGEM Pipe SN 4 Coex DN/OD 315 x 1000 mm	9	1
225020	KGEM Pipe SN 4 Coex DN/OD 315 x 2000 mm	9	1
225030	KGEM Pipe SN 4 Coex DN/OD 315 x 3000 mm	9	1
225050	KGEM Pipe SN 4 Coex DN/OD 315 x 5000 mm	9	1
226010	KGEM Pipe SN 4 Coex DN/OD 400 x 1000 mm	6	1
226020	KGEM Pipe SN 4 Coex DN/OD 400 x 2000 mm	6	1
226050	KGEM Pipe SN 4 Coex DN/OD 400 x 5000 mm	6	1
227010	KGEM Pipe SN 4 Coex DN/OD 500 x 1000 mm	4	1
227020	KGEM Pipe SN 4 Coex DN/OD 500 x 2000 mm	4	1
227050	KGEM Pipe SN 4 Coex DN/OD 500 x 5000 mm	4	1

## SN 8 Coex pipes

### KGEM – Pipe SN 8 Coex



No.	Description	Unit/pallet	Unit
222170	KGEM Pipe SN 8 Coex DN/OD 160 x 1000 mm	40	1
222180	KGEM Pipe SN 8 Coex DN/OD 160 x 3000 mm	40	1
222190	KGEM Pipe SN 8 Coex DN/OD 160 x 5000 mm	40	1
223170	KGEM Pipe SN 8 Coex DN/OD 200 x 1000 mm	25	1
223180	KGEM Pipe SN 8 Coex DN/OD 200 x 3000 mm	25	1
223190	KGEM Pipe SN 8 Coex DN/OD 200 x 5000 mm	25	1
224170	KGEM Pipe SN 8 Coex DN/OD 250 x 1000 mm	16	1
224180	KGEM Pipe SN 8 Coex DN/OD 250 x 3000 mm	16	1
224190	KGEM Pipe SN 8 Coex DN/OD 250 x 5000 mm	16	1
225170	KGEM Pipe SN 8 Coex DN/OD 315 x 1000 mm	9	1
225180	KGEM Pipe SN 8 Coex DN/OD 315 x 3000 mm	9	1
225190	KGEM Pipe SN 8 Coex DN/OD 315 x 5000 mm	9	1
226170	KGEM Pipe SN 8 Coex DN/OD 400 x 1000 mm	6	1
226180	KGEM Pipe SN 8 Coex DN/OD 400 x 3000 mm	6	1
226190	KGEM Pipe SN 8 Coex DN/OD 400 x 5000 mm	6	1
227180	KGEM Pipe SN 8 Coex DN/OD 500 x 3000 mm	4	1
227190	KGEM Pipe SN 8 Coex DN/OD 500 x 5000 mm	4	1

# KG-System (PVC-U) Coex SN 4, Coex SN 8, Full wall SN 10

Delivery Range 2021

Version 05/2021

## SN 10 Full wall

### KGEM – Pipe SN 10 Full wall



No.	Description	Unit/pallet	Unit
220065	KGEM Pipe SN 10 Full wall DN/OD 110 x 500 mm	50	1
220110	KGEM Pipe SN 10 Full wall DN/OD 110 x 1000 mm	50	1
220130	KGEM Pipe SN 10 Full wall DN/OD 110 x 3000 mm	50	1
220160	KGEM Pipe SN 10 Full wall DN/OD 110 x 6000 mm	50	1
222110	KGEM Pipe SN 10 Full wall DN/OD 160 x 1000 mm	35	1
222130	KGEM Pipe SN 10 Full wall DN/OD 160 x 3000 mm	35	1
222160	KGEM Pipe SN 10 Full wall DN/OD 160 x 6000 mm	35	1
223110	KGEM Pipe SN 10 Full wall DN/OD 200 x 1000 mm	25	1
223130	KGEM Pipe SN 10 Full wall DN/OD 200 x 3000 mm	25	1
223160	KGEM Pipe SN 10 Full wall DN/OD 200 x 6000 mm	25	1
224110	KGEM Pipe SN 10 Full wall DN/OD 250 x 1000 mm	16	1
224130	KGEM Pipe SN 10 Full wall DN/OD 250 x 3000 mm	16	1
224160	KGEM Pipe SN 10 Full wall DN/OD 250 x 6000 mm	16	1
225110	KGEM Pipe SN 10 Full wall DN/OD 315 x 1000 mm	9	1
225130	KGEM Pipe SN 10 Full wall DN/OD 315 x 3000 mm	9	1
225160	KGEM Pipe SN 10 Full wall DN/OD 315 x 6000 mm	9	1
226110	KGEM Pipe SN 10 Full wall DN/OD 400 x 1000 mm	6	1
226130	KGEM Pipe SN 10 Full wall DN/OD 400 x 3000 mm	6	1
226160	KGEM Pipe SN 10 Full wall DN/OD 400 x 6000 mm	6	1
227110	KGEM Pipe SN 10 Full wall DN/OD 500 x 1000 mm	4	1
227130	KGEM Pipe SN 10 Full wall DN/OD 500 x 3000 mm	4	1
227160	KGEM Pipe SN 10 Full wall DN/OD 500 x 6000 mm	4	1

## KGB – Bend



15 Degrees



30 Degrees



45 Degrees



67,5 Degrees



87,5 Degrees

No.	Description	Unit/pallet	Unit
220200	KGB Bend DN/OD 110 15 Degrees	320	1
221200	KGB Bend DN/OD 125 15 Degrees	230	1
222200	KGB Bend DN/OD 160 15 Degrees	110	1
223200	KGB Bend DN/OD 200 15 Degrees	50	1
224200	KGB Bend DN/OD 250 15 Degrees	24	1
225200	KGB Bend DN/OD 315 15 Degrees	12	1
226200	KGB Bend DN/OD 400 15 Degrees	8	1
227200	KGB Bend DN/OD 500 15 Degrees	2	1
220210	KGB Bend DN/OD 110 30 Degrees	288	1
221210	KGB Bend DN/OD 125 30 Degrees	208	1
222210	KGB Bend DN/OD 160 30 Degrees	100	1
223210	KGB Bend DN/OD 200 30 Degrees	50	1
224210	KGB Bend DN/OD 250 30 Degrees	24	1
225210	KGB Bend DN/OD 315 30 Degrees	12	1
226210	KGB Bend DN/OD 400 30 Degrees	6	1
227210	KGB Bend DN/OD 500 30 Degrees	2	1
220220	KGB Bend DN/OD 110 45 Degrees	264	1
221220	KGB Bend DN/OD 125 45 Degrees	180	1
222220	KGB Bend DN/OD 160 45 Degrees	92	1
223220	KGB Bend DN/OD 200 45 Degrees	44	1
224220	KGB Bend DN/OD 250 45 Degrees	24	1
225220	KGB Bend DN/OD 315 45 Degrees	12	1
226220	KGB Bend DN/OD 400 45 Degrees	6	1
227220	KGB Bend DN/OD 500 45 Degrees	2	1
220230	KGB Bend DN/OD 110 67,5 Degrees	228	1
221230	KGB Bend DN/OD 125 67,5 Degrees	150	1
222230	KGB Bend DN/OD 160 67,5 Degrees	76	1
223230	KGB Bend DN/OD 200 67,5 Degrees	40	1
220240	KGB Bend DN/OD 110 87,5 Degrees	200	1
221240	KGB Bend DN/OD 125 87,5 Degrees	140	1
222240	KGB Bend DN/OD 160 87,5 Degrees	70	1
223240	KGB Bend DN/OD 200 87,5 Degrees	30	1
224240	KGB Bend DN/OD 250 87,5 Degrees	18	1
225240	KGB Bend DN/OD 315 87,5 Degrees	9	1
226240	KGB Bend DN/OD 400 87,5 Degrees	4	1
227240	KGB Bend DN/OD 500 87,5 Degrees	1	1

# KG-System (PVC-U) Coex SN 4, Coex SN 8, Full wall SN 10

Delivery Range 2021

Version 05/2021



## KGEA – Branch 45°

No.	Description	Unit/pallet	Unit
220300	KGEA Branch DN/OD 110/110 45 Degrees	100	1
221310	KGEA Branch DN/OD 125/110 45 Degrees	70	1
221300	KGEA Branch DN/OD 125/125 45 Degrees	70	1
222320	KGEA Branch DN/OD 160/110 45 Degrees	50	1
222310	KGEA Branch DN/OD 160/125 45 Degrees	45	1
222300	KGEA Branch DN/OD 160/160 45 Degrees	34	1
223330	KGEA Branch DN/OD 200/110 45 Degrees	30	1
223320	KGEA Branch DN/OD 200/125 45 Degrees	32	1
223310	KGEA Branch DN/OD 200/160 45 Degrees	25	1
223300	KGEA Branch DN/OD 200/200 45 Degrees	20	1
224340	KGEA Branch DN/OD 250/110 45 Degrees	18	1
224330	KGEA Branch DN/OD 250/125 45 Degrees	16	1
224320	KGEA Branch DN/OD 250/160 45 Degrees	14	1
224310	KGEA Branch DN/OD 250/200 45 Degrees	12	1
224300	KGEA Branch DN/OD 250/250 45 Degrees	8	1
225350	KGEA Branch DN/OD 315/110 45 Degrees	10	1
225330	KGEA Branch DN/OD 315/160 45 Degrees	10	1
225320	KGEA Branch DN/OD 315/200 45 Degrees	8	1
225310	KGEA Branch DN/OD 315/250 45 Degrees	5	1
225300	KGEA Branch DN/OD 315/315 45 Degrees	4	1
226360	KGEA Branch DN/OD 400/110 45 Degrees	5	1
226340	KGEA Branch DN/OD 400/160 45 Degrees	5	1
226330	KGEA Branch DN/OD 400/200 45 Degrees	5	1
226320	KGEA Branch DN/OD 400/250 45 Degrees	3	1
226310	KGEA Branch DN/OD 400/315 45 Degrees	2	1
226300	KGEA Branch DN/OD 400/400 45 Degrees	1	1
227350	KGEA Branch DN/OD 500/160 45 Degrees	2	1
227340	KGEA Branch DN/OD 500/200 45 Degrees	1	1
227320	KGEA Branch DN/OD 500/315 45 Degrees	1	1
227300	KGEA Branch DN/OD 500/500 45 Degrees	1	1



## KGEA – Branch 87°

No.	Description	Unit/pallet	Unit
220400	KGEA Branch DN/OD 110/110 87,5 Degrees	120	1
221410	KGEA Branch DN/OD 125/110 87,5 Degrees	100	1
221400	KGEA Branch DN/OD 125/125 87,5 Degrees	88	1
222420	KGEA Branch DN/OD 160/110 87,5 Degrees	60	1
222410	KGEA Branch DN/OD 160/125 87,5 Degrees	45	1
222400	KGEA Branch DN/OD 160/160 87,5 Degrees	45	1
223430	KGEA Branch DN/OD 200/110 87,5 Degrees	38	1
223410	KGEA Branch DN/OD 200/160 87,5 Degrees	32	1
223400	KGEA Branch DN/OD 200/200 87,5 Degrees	24	1
224440	KGEA Branch DN/OD 250/110 87,5 Degrees	20	1
224420	KGEA Branch DN/OD 250/160 87,5 Degrees	18	1
224410	KGEA Branch DN/OD 250/200 87,5 Degrees	13	1
224400	KGEA Branch DN/OD 250/250 87,5 Degrees	10	1
225450	KGEA Branch DN/OD 315/110 87,5 Degrees	10	1
225430	KGEA Branch DN/OD 315/160 87,5 Degrees	10	1
225420	KGEA Branch DN/OD 315/200 87,5 Degrees	7	1
225410	KGEA Branch DN/OD 315/250 87,5 Degrees	6	1
225400	KGEA Branch DN/OD 315/315 87,5 Degrees	6	1
226460	KGEA Branch DN/OD 400/110 87,5 Degrees	5	1
226440	KGEA Branch DN/OD 400/160 87,5 Degrees	5	1
226430	KGEA Branch DN/OD 400/200 87,5 Degrees	4	1
226420	KGEA Branch DN/OD 400/250 87,5 Degrees	4	1
226410	KGEA Branch DN/OD 400/315 87,5 Degrees	2	1
226400	KGEA Branch DN/OD 400/400 87,5 Degrees	2	1
227450	KGEA Branch DN/OD 500/160 87,5 Degrees	2	1
227420	KGEA Branch DN/OD 500/315 87,5 Degrees	1	1
227400	KGEA Branch DN/OD 500/500 87,5 Degrees	1	1

# KG-System (PVC-U) Coex SN 4, Coex SN 8, Full wall SN 10

Delivery Range 2021

Version 05/2021



## KGAM – Single socket

No.	Description	Unit/pallet	Unit
220810	KGAM Single socket DN/OD 110	450	1
221810	KGAM Single socket DN/OD 125	336	1
222810	KGAM Single socket DN/OD 160	180	1



## KGK – Cap

No.	Description	Unit/pallet	Unit
220630	KGK Cap DN/OD 110	1150	10
221630	KGK Cap DN/OD 125	840	10
222630	KGK Cap DN/OD 160	430	10
223630	KGK Cap DN/OD 200	224	8
224630	KGK Cap DN/OD 250	150	1
225630	KGK Cap DN/OD 315	80	1
226630	KGK Cap DN/OD 400	44	1
227630	KGK Cap DN/OD 500	26	1



## KGM – Plug

No.	Description	Unit/pallet	Unit
220620	KGM Plug DN/OD 110	1360	10
221620	KGM Plug DN/OD 125	870	10
222620	KGM Plug DN/OD 160	368	8
223620	KGM Plug DN/OD 200	224	8
224620	KGM Plug DN/OD 250	96	1
225620	KGM Plug DN/OD 315	60	1
226620	KGM Plug DN/OD 400	32	1
227620	KGM Plug DN/OD 500	10	1



## KGMM – Double socket

No.	Description	Unit/pallet	Unit
220510	KGMM Double socket DN/OD 110	320	1
221510	KGMM Double socket DN/OD 125	240	1
222510	KGMM Double socket DN/OD 160	110	1
223510	KGMM Double socket DN/OD 200	60	1
224510	KGMM Double socket DN/OD 250	32	1
225510	KGMM Double socket DN/OD 315	16	1
226510	KGMM Double socket DN/OD 400	8	1

## KGU – Coupler



No.	Description	Unit/pallet	Unit
220500	KGU Coupler DN/OD 110	320	1
221500	KGU Coupler DN/OD 125	240	1
222500	KGU Coupler DN/OD 160	110	1
223500	KGU Coupler DN/OD 200	60	1
224500	KGU Coupler DN/OD 250	32	1
225500	KGU Coupler DN/OD 315	16	1
226500	KGU Coupler DN/OD 400	8	1
227500	KGU Coupler DN/OD 500	2	1

## KGUG – Connection piece to cast-iron pipes



No.	Description	Unit/pallet	Unit
220820	KGUG Connection piece to cast-iron pipes DN/OD 110 (without gasket)	600	1
221820	KGUG Connection piece to cast-iron pipes DN/OD 125 (without gasket)	360	1
222820	KGUG Connection piece to cast-iron pipes DN/OD 160 (without gasket)	210	1
223820	KGUG Connection piece to cast-iron pipes DN/OD 200 (without gasket)	100	1

## KGUS – Connection piece to stoneware pipe (spigot end)



No.	Description	Unit/pallet	Unit
220830	KGUS Connection piece to stoneware pipe (spigot end) DN/OD 110 (complete with gasket)	288	1
221830	KGUS Connection piece to stoneware pipe (spigot end) DN/OD 125 (complete with gasket)	180	1
222830	KGUS Connection piece to stoneware pipe (spigot end) DN/OD 160 (complete with gasket)	100	1
223830	KGUS Connection piece to stoneware pipe (spigot end) DN/OD 200 (complete with gasket)	48	1
224830	KGUS Connection piece to stoneware pipe (spigot end) DN/OD 250 (without gasket)	36	1
225830	KGUS Connection piece to stoneware pipe (spigot end) DN/OD 315 (without gasket)	18	1

## KGUSM – Connection piece to stoneware pipe (socket)



No.	Description	Unit/pallet	Unit
220840	KGUSM Connection piece to stoneware pipe (socket) DN/OD 110	455	1
221840	KGUSM Connection piece to stoneware pipe (socket) DN/OD 125	320	1
222840	KGUSM Connection piece to stoneware pipe (socket) DN/OD 160	226	1
223840	KGUSM Connection piece to stoneware pipe (socket) DN/OD 200	120	1
224840	KGUSM Connection piece to stoneware pipe (socket) DN/OD 250	30	1
225840	KGUSM Connection piece to stoneware pipe (socket) DN/OD 315	20	1

# KG-System (PVC-U) Coex SN 4, Coex SN 8, Full wall SN 10

Delivery Range 2021

Version 05/2021

## KGR – Reducer, eccentric



No.	Description	Unit/pallet	Unit
221700	KGR Reducer, eccentric DN/OD 125/110	300	1
222700	KGR Reducer, eccentric DN/OD 160/110	250	1
222710	KGR Reducer, eccentric DN/OD 160/125	240	1
223700	KGR Reducer, eccentric DN/OD 200/160	130	1
224700	KGR Reducer, eccentric DN/OD 250/200	54	1
225700	KGR Reducer, eccentric DN/OD 315/250	30	1
226700	KGR Reducer, eccentric DN/OD 400/315	12	1
227700	KGR Reducer, eccentric DN/OD 500/400	4	1



## KGRE – Inspection pipe, angular

No.	Description	Unit/pallet	Unit
220600	KGRE Inspection pipe, angular DN/OD 110	102	1
221600	KGRE Inspection pipe, angular DN/OD 125	70	1
222600	KGRE Inspection pipe, angular DN/OD 160	44	1
223600	KGRE Inspection pipe, angular DN/OD 200	22	1



## KGRE – Spare bolt for Inspection pipe

No.	Description	Unit/pallet	Unit
220611	KGRE Spare bolt for Inspection pipe DN/OD 110-200		1



## KGRE – Inspection pipe, round

No.	Description	Unit/pallet	Unit
220640	KGRE Inspection pipe, round DN/OD 110	160	20
221640	KGRE Inspection pipe, round DN/OD 125	120	15
222640	KGRE Inspection pipe, round DN/OD 160	65	1
223640	KGRE Inspection pipe, round DN/OD 200	30	1
824600	KGRE Inspection pipe, round DN/OD 250	15	1
825600	KGRE Inspection pipe, round DN/OD 315	10	1
826600	KGRE Inspection pipe, round DN/OD 400	5	1



## KGBA – Connection to concrete pipe

No.	Description	Unit/pallet	Unit
877570	Connection to concrete pipe BA DN/OD 160	90	1
877670	Connection to concrete pipe BA DN/OD 200	40	1



## KGEA – Triple Socket Branch

No.	Description	Unit/pallet	Unit
220310	KGEA Triple Socket Branch DN/OD 110/110 45°	120	10
220410	KGEA Triple Socket Branch DN/OD 110/110 87,5°	120	10



## KGBD – Bend 2M

No.	Description	Unit/pallet	Unit
228070	KGBD Bend 2M DN/OD 110 15 Degrees	180	15
228075	KGBD Bend 2M DN/OD 110 30 Degrees	180	15
228080	KGBD Bend 2M DN/OD 110 45 Degrees	180	15



## KGB – Bend SW

No.	Description	Unit/pallet	Unit
228088	KGB Bend 1M SW DN/OD 110 87,5 Degrees	120	10
228085	KGBD Bend 2M SW DN/OD 110 87,5 Degrees	120	10



## Sika Watering Cap

The SIKa Watering Cap is used in connection with watering pipe DN (OD) 80/110. The laying of the pipe is carried out ringlike around the root ball of the plants. So the water is distributed very quickly around the complete root area and drips from the outlets into the ground. The supply by tank lorries is simplified and a tree population is possible without any problems in a paved area. In such areas (as for example in pedestrian zones) the trees can be supplied not only with water but also with the necessary quantity of nutrients.

No.	Description	Unit/pallet	Unit
662400	Sika Watering Cap DN/OD 80/110	432	12



## KGF – Chamber lining\*

No.	Description	Colour	Raw material	Unit/pallet	Unit
820900	KGF Chamber lining DN/OD 110/110	orange	PVC	360	1
821900	KGF Chamber lining DN/OD 125/110	black	PS	280	1
822900	KGF Chamber lining DN/OD 160/110	orange	PVC	168	1
823900	KGF Chamber lining DN/OD 200/110	orange	PVC	114	1
820910	KGF Chamber lining DN/OD 110/240	orange	PVC	168	1
821910	KGF Chamber lining DN/OD 125/240	black	PS	120	1
822910	KGF Chamber lining DN/OD 160/240	orange	PVC	72	1
823910	KGF Chamber lining DN/OD 200/240	orange	PVC	45	1
824910	KGF Chamber lining DN/OD 250/240	white	PP	33	1
825910	KGF Chamber lining DN/OD 315/240	white	PP	18	1
826910	KGF Chamber lining DN/OD 400/240	black	PS	15	1
827910	KGF Chamber lining DN/OD 500/240	black	PS	12	1

\*Colour and raw material may vary.

# KG-System (PVC-U) Coex SN 4, Coex SN 8, Full wall SN 10

Delivery Range 2021

Version 05/2021

## KG – Lubricant



No.	Description	Unit/pallet	Unit
881800	Lubricant 150 ml	1750	50
881810	Lubricant 250 ml	1800	50
881820	Lubricant 500 ml	864	24
881830	Lubricant 1000 ml	432	12
881840	Lubricant 3000 ml bucket	120	1

## KG – SBR Lip seal



No.	Description	Unit/pallet	Unit
880060	SBR Lip seal DN/OD 110 (KG PVC)	5220	1
880075	SBR Lip seal DN/OD 125 (KG PVC)	3600	1
880090	SBR Lip seal DN/OD 160 (KG PVC)	1836	1
880100	SBR Lip seal DN/OD 200 (KG PVC)	1080	1
880110	SBR Lip seal DN/OD 250 (KG PVC)	462	1
880120	SBR Lip seal DN/OD 315 (KG PVC)	720	1
880130	SBR Lip seal DN/OD 400 (KG PVC)	400	1
880140	SBR Lip seal DN/OD 500 (KG PVC)	250	1

## KG – NBR Lip seal (resistant against oils, petrol and fats (animal, vegetable, mineral))



No.	Description	Unit/pallet	Unit
880260	NBR Lip seal DN/OD 110 (KG PVC, Skolan Safe fitting, HT Safe)	5481	1
880275	NBR Lip seal DN/OD 125 (KG PVC, HT Safe)	3600	1
880290	NBR Lip seal DN/OD 160 (KG PVC, HT Safe)	1863	1
880300	NBR Lip seal DN/OD 200 (KG PVC)	1080	1
880310	NBR Lip seal DN/OD 250 (KG PVC)	1000	1
880320	NBR Lip seal DN/OD 315 (KG PVC)	720	1
880330	NBR Lip seal DN/OD 400 (KG PVC)	400	1
880340	NBR Lip seal DN/OD 500 (KG PVC)	250	1

## KG – Drill bit adaptor for connecting saddle



No.	Description	Unit/pallet	Unit
660800	Drill bit adaptor for connecting saddle 160 mm (drilling diameter 159 mm)	18	1

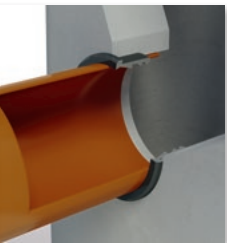
NEW!

## KG – Connection saddle



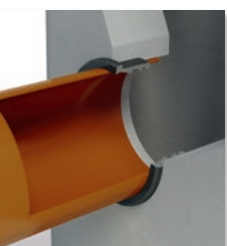
No.	Description	Unit/pallet	Unit
660400	Connection saddle KG DN/OD 400/160	40	1

NEW!



## KG – Gaskets BA-M

No.	Description	Unit/pallet	Unit
881160	Gaskets BA-M DN/OD 110	448	56
881170	Gaskets BA-M DN/OD 125	320	40
881180	Gaskets BA-M DN/OD 160	320	40
881190	Gaskets BA-M DN/OD 200	256	32
881860	Gaskets BA-M DN/OD 250	256	32
881870	Gaskets BA-M DN/OD 315	176	22
881880	Gaskets BA-M DN/OD 400	160	20



## KG – Gaskets BA-M NBR

No.	Description	Unit/pallet	Unit
881165	Gaskets BA-M DN/OD 110 NBR	448	56
881175	Gaskets BA-M DN/OD 125 NBR	320	40
881185	Gaskets BA-M DN/OD 160 NBR	320	40
881195	Gaskets BA-M DN/OD 200 NBR	256	32

## Fitting dimensions BA-M

Dimension of pipe (mm)	Pipe diameter outside (mm)	Bore diameter (mm)	Type of gasket
Fits with pipes and tubes KG PVC according to norm DIN 19534			
100	110	138	110/138
125	125	151	125/151
150	160	186	160/186
200	200	226	200/226
250	250	276	250/276
300	315	341	315/341
400	400	426	400/426

## KG – GA-Gasket



No.	Description	Unit/pallet	Unit
881025	GA-Gasket DN/OD 110*	1344	16

\*suitable also for HT Safe and Skolan Safe

## KG – GA-Set gasket



No.	Description	Unit/pallet	Unit
881030	GA-Set gasket DN/OD 125	1176	14
881040	GA-Set gasket DN/OD 160	840	10
881050	GA-Set gasket DN/OD 200	840	10

## KG – Profile gasket for KGUS



No.	Description	Unit/pallet	Unit
881100	Profile gasket for KGUS DN/OD 110	1500	1
881110	Profile gasket for KGUS DN/OD 125	1100	1
881120	Profile gasket for KGUS DN/OD 160	800	1
881130	Profile gasket for KGUS DN/OD 200	275	1
881140	Profile gasket for KGUS DN/OD 250	216	1
881150	Profile gasket for KGUS DN/OD 315	168	1

# KG-System (PVC-U) grey (NF 442)

Delivery Range 2021

Version 05/2021



## KGEM – Pipe SN 8 Coex grey

No.	Description	Unit/pallet	Unit
230180	KGEM Pipe SN 8 Coex grey NF DN/OD 110 x 3000 mm	86	Pallet
231180	KGEM Pipe SN 8 Coex grey NF DN/OD 125 x 3000 mm	60	Pallet
232180	KGEM Pipe SN 8 Coex grey NF DN/OD 160 x 3000 mm	40	Pallet
233180	KGEM Pipe SN 8 Coex grey NF DN/OD 200 x 3000 mm	25	Pallet
234180	KGEM Pipe SN 8 Coex grey NF DN/OD 250 x 3000 mm	16	Pallet
235180	KGEM Pipe SN 8 Coex grey NF DN/OD 315 x 3000 mm	9	Pallet
236180	KGEM Pipe SN 8 Coex grey NF DN/OD 400 x 3000 mm	6	Pallet
237180	KGEM Pipe SN 8 Coex grey NF DN/OD 500 x 3000 mm	4	Pallet



15 Degrees



30 Degrees



45 Degrees



67,5 Degrees



87,5 Degrees

## KGB – Bend grey

No.	Description	Unit/pallet	Unit	
230200-03	KGB Bend DN/OD 110 15 Degrees grey NF single carton	256	16	Unit changed
231200-03	KGB Bend DN/OD 125 15 Degrees grey NF single carton	240	20	
232200-03	KGB Bend DN/OD 160 15 Degrees grey NF single carton	120	10	
233200-09	KGB Bend DN/OD 200 15 Degrees grey NF pallet carton	50	1	
234200-09	KGB Bend DN/OD 250 15 Degrees grey NF pallet carton	24	1	
235200-09	KGB Bend DN/OD 315 15 Degrees grey NF pallet carton	12	1	
230210-03	KGB Bend DN/OD 110 30 Degrees grey NF single carton	256	16	Unit changed
231210-03	KGB Bend DN/OD 125 30 Degrees grey NF single carton	120	10	
232210-03	KGB Bend DN/OD 160 30 Degrees grey NF single carton	96	8	
233210-09	KGB Bend DN/OD 200 30 Degrees grey NF pallet carton	50	1	
234210-09	KGB Bend DN/OD 250 30 Degrees grey NF pallet carton	24	1	
235210-09	KGB Bend DN/OD 315 30 Degrees grey NF pallet carton	12	1	
230220-03	KGB Bend DN/OD 110 45 Degrees grey NF single carton	256	16	Unit changed
231220-03	KGB Bend DN/OD 125 45 Degrees grey NF single carton	144	12	
232220-03	KGB Bend DN/OD 160 45 Degrees grey NF single carton	96	8	
233220-09	KGB Bend DN/OD 200 45 Degrees grey NF pallet carton	44	1	
234220-09	KGB Bend DN/OD 250 45 Degrees grey NF pallet carton	24	1	
235220-09	KGB Bend DN/OD 315 45 Degrees grey NF pallet carton	12	1	
230230-03	KGB Bend DN/OD 110 67,5 Degrees grey NF single carton	240	20	
231230-03	KGB Bend DN/OD 125 67,5 Degrees grey NF single carton	120	10	
232230-03	KGB Bend DN/OD 160 67,5 Degrees grey NF single carton	60	5	
230240-03	KGB Bend DN/OD 110 87,5 Degrees grey NF single carton	192	12	Unit changed
231240-03	KGB Bend DN/OD 125 87,5 Degrees grey NF single carton	120	10	
232240-03	KGB Bend DN/OD 160 87,5 Degrees grey NF single carton	60	5	
233240-09	KGB Bend DN/OD 200 87,5 Degrees grey NF pallet carton	30	1	
234240-09	KGB Bend DN/OD 250 87,5 Degrees grey NF pallet carton	18	1	
235240-09	KGB Bend DN/OD 315 87,5 Degrees grey NF pallet carton	9	1	

## KGEA – Branch 45° grey



No.	Description	Unit/pallet	Unit
230300-03	KGEA Branch DN/OD 110/110 45 Degrees grey NF single carton	120	10
231310-03	KGEA Branch DN/OD 125/110 45 Degrees grey NF single carton	60	5
231300-03	KGEA Branch DN/OD 125/125 45 Degrees grey NF single carton	60	5
232320-03	KGEA Branch DN/OD 160/110 45 Degrees grey NF single carton	60	5
232310-03	KGEA Branch DN/OD 160/125 45 Degrees grey NF single carton	36	3
232300-03	KGEA Branch DN/OD 160/160 45 Degrees grey NF single carton	36	3
233330-09	KGEA Branch DN/OD 200/110 45 Degrees grey* pallet carton	30	1
233310-09	KGEA Branch DN/OD 200/160 45 Degrees grey NF pallet carton	25	1
233300-09	KGEA Branch DN/OD 200/200 45 Degrees grey NF pallet carton	20	1
234320-09	KGEA Branch DN/OD 250/160 45 Degrees grey NF pallet carton	14	1
234310-09	KGEA Branch DN/OD 250/200 45 Degrees grey NF pallet carton	12	1
234300-09	KGEA Branch DN/OD 250/250 45 Degrees grey NF pallet carton	8	1
235330-09	KGEA Branch DN/OD 315/160 45 Degrees grey NF pallet carton	10	1

\* no NF

## KGEA – Branch 87° grey



No.	Description	Unit/pallet	Unit
230400-03	KGEA Branch DN/OD 110/110 87,5 Degrees grey NF single carton	120	10
232420-03	KGEA Branch DN/OD 160/110 87,5 Degrees grey NF single carton	60	5
232410-03	KGEA Branch DN/OD 160/125 87,5 Degrees grey NF single carton	60	5
232400-03	KGEA Branch DN/OD 160/160 87,5 Degrees grey NF single carton	48	4
233400-09	KGEA Branch DN/OD 200/200 87,5 Degrees grey* pallet carton	24	1
234400-09	KGEA Branch DN/OD 250/250 87,5 Degrees grey NF pallet carton	10	1

\* no NF

## KGM – Plug grey



No.	Description	Unit/pallet	Unit
230620-03	KGM Plug DN/OD 110 grey NF single carton	960	20
231620-03	KGM Plug DN/OD 125 grey NF single carton	720	20
232620-03	KGM Plug DN/OD 160 grey NF single carton	240	20
233620-09	KGM Plug DN/OD 200 grey NF pallet carton	224	1
234620-09	KGM Plug DN/OD 250 grey NF pallet carton	96	1
235620-09	KGM Plug DN/OD 315 grey NF pallet carton	60	1

## KGMM – Double socket grey



No.	Description	Unit/pallet	Unit
230510-03	KGMM Double socket DN/OD 110 grey NF single carton	240	20
231510-03	KGMM Double socket DN/OD 125 grey NF single carton	240	20
232510-03	KGMM Double socket DN/OD 160 grey NF single carton	120	10
233510-09	KGMM Double socket DN/OD 200 grey NF pallet carton	60	1
234510-09	KGMM Double socket DN/OD 250 grey NF pallet carton	32	1
235510-09	KGMM Double socket DN/OD 315 grey NF pallet carton	16	1

# KG-System (PVC-U) grey (NF 442)

Delivery Range 2021

Version 05/2021



## KGU – Coupler grey

No.	Description	Unit/pallet	Unit
230500-03	KGU Coupler DN/OD 110 grey NF single carton	240	20
231500-03	KGU Coupler DN/OD 125 grey NF single carton	240	20
232500-03	KGU Coupler DN/OD 160 grey NF single carton	120	10
233500-09	KGU Coupler DN/OD 200 grey NF pallet carton	60	1
234500-09	KGU Coupler DN/OD 250 grey NF pallet carton	32	1
235500-09	KGU Coupler DN/OD 315 grey NF pallet carton	16	1



## KGR – Reducer, eccentric grey

No.	Description	Unit/pallet	Unit
231700-03	KGR Reducer, eccentric DN/OD 125/110 grey NF single carton	240	20
232700-03	KGR Reducer, eccentric DN/OD 160/110 grey NF single carton	240	20
232710-03	KGR Reducer, eccentric DN/OD 160/125 grey NF single carton	160	20
233700-09	KGR Reducer, eccentric DN/OD 200/160 grey NF pallet carton	130	1
234700-09	KGR Reducer, eccentric DN/OD 250/200 grey NF pallet carton	54	1
235700-09	KGR Reducer, eccentric DN/OD 315/250 grey NF pallet carton	30	1



## KGRE – Inspection pipe, angular grey

No.	Description	Unit/pallet	Unit
230600-03	KGRE Inspection pipe, angular grey DN/OD 110 grey* single carton	96	8
232600-03	KGRE Inspection pipe, angular grey DN/OD 160 grey* single carton	24	2

\* no NF



## KGBD – Bend 2M grey

No.	Description	Unit/pallet	Unit
238070-03	KGBD Bend 2M DN/OD 110 15 Degrees grey NF single carton	180	15
238075-03	KGBD Bend 2M DN/OD 110 30 Degrees grey NF single carton	180	15
238080-03	KGBD Bend 2M DN/OD 110 45 Degrees grey NF single carton	180	15



## KGEA – Triple Socket Branch grey

No.	Description	Unit/pallet	Unit
230310-03	KGEA Triple Socket Branch DN/OD 110/110 45 Degrees grey NF single carton	120	10
230410-03	KGEA Triple Socket Branch DN/OD 110/110 87,5 Degrees grey NF single carton	120	10



## KGB – Bogen SW grey

No.	Description	Unit/pallet	Unit
238088-03	KGB Bend 1M SW DN/OD 110 87,5 Degrees grey NF single carton	120	10
238085-03	KGBD Bend 2M SW DN/OD 110 87,5 Degrees grey NF single carton	120	10

*Technical modifications reserved.*

